

รายงานผลการปฏิบัติตามมาตรการป้องกันและแก้ไขผลกระทบสิ่งแวดล้อม  
และมาตรการติดตามตรวจสอบคุณภาพสิ่งแวดล้อม



โครงการเหมืองแร่หินอุตสาหกรรมชนิดหินปูน เพื่ออุตสาหกรรมก่อสร้าง

ประทานบัตรที่ 27100/15151

บริษัท อรพินก่อสร้าง จำกัด

หมู่ที่ 5 ตำบลผานกเคี้ยว อำเภอกงกระด้าง จังหวัดเลย

จัดทำโดย

บริษัท ไมน์ เอ็นจิเนียริง คอนซัลแตนท์ จำกัด

พฤษภาคม 2556

		<b>II</b>
		<b>II</b>
		<b>II</b>
	<b>1</b>	
1.1		1-1
1.2		1-1
	1.2.1	1-1
	1.2.2	1-2
	1.2.3	1-2
	1.2.4	1-2
	1.2.5	1-2
1.3		1-6
	1.3.1	1-6
	1.3.2	1-6
	<b>2</b>	
2.1		2-1
2.2		2-8
	2.2.1	2-8
	2.2.2	2-10
	2.2.3	2-11
	<b>3</b>	
3.1		3-1
3.2		3-2
	3.2.1	3-2
	3.2.2	3-3
	3.2.3	3-5
3.3		3-5

- 1
- 2
- 3
- 4

1-1			1-3
1-2			1-4
1-3			1-5
2-1			2-9
3-1	(TSP)		
			3-3
3-2	24 (L <sub>eq</sub> ) ( . .2549- )		
			3-4
3-3	(L <sub>max</sub> ) ( . .2549- )		
			3-5
1-1			1-7
2-1			2-1
2-2		24-25 2556	2-10
2-3	24	24-25 2556	2-11
2-4			2-13
2-5			2-14
3-1		( . .2549- )	3-2
3-2	(L <sub>eq</sub> ) (L <sub>max</sub> ) ( . .2549- )		3-4
3-3		.	3-6
3-4			3-7
3-5			3-8

# 1

## 1.1

2/2549 ( )  
( 1-1) ( 1) 27100/15151  
( 27100/15151) 2/2549  
2550 ( 2) 0506/4990 28

## 1.2

### 1.2.1

1.  
2. ( )  
3. 5  
4. 135-0-93  
5. 27100/15151 25 2541 24  
2551 25 2541 24 1  
25 2551 24 2561 1

1.2.2

			1:50,000	L7017
5342 I	1866-1867		815-816	
	340-440 . . ( 1-1)			

1-2

1.2.3

	201 ( - )			
(	129)	80		
3006 (	- )	2.5		82.5
	( 1-3)			

1.2.4

1.

27100/15151

2.

1-2

9

9

1.2.5

1.

2.

AN-FO

Dynamite

Emulsion

Top Hammer

Hydraulic

Air Track

3.

1.3

)

2

(

1.3.1

2

2/2549

1.3.2

0506/4990

28

2550

1-1

1-1


1.	- (TSP) 24	6 - -	1. 2. 3.
2.	- $L_{eq}$ 24 hrs. $L_{max}$	6 - -	1. 2.
3..	- (Vibration)	6 - -	1. 2. 3. (

: 0506/4990 28 2550

# 2


2.1

( 2 ) ) 2/2549 ( ( 27100/15151 )  
2-1 2-1





1.	10 6 7	5 20 6 7 10 20	5, 10	1-2
2.	10 10		10	







2-1( )

		/		
3.	<p>AN-FO</p> <p>139.2 / 1</p> <p>12.00-13.00 .</p> <p>16.00-17.00 .</p> <p>100</p> <p>500</p>	<p>12.00-</p> <p>13.00 . 16.00-17.00 .</p> <p>1</p>	✓	
4.	<p>2</p>		✓	
5.				
6.	<p>:</p> <p>:</p>		✓	






2-1( )

		/	✓	
7.	1 2556 2556		✓	
8.  12      2548				   




2-1( )

		/			
	- ) (				
9.	-	24-25	2556	✓	  
2	(TSP)	2.2.1			

2-1( )

				/	
1	2	2556	24-25	✓	
		2.2.3	2.2.2		
		2556	24	✓	
		0.125	/		
					

2-1( )

		/	✓	
10.	( 9-10) 1-2			  
3	3 2555			

2-1( )

		/		
11.	- 1		✓	
12.	-		✓	
13.	-		✓	
14.	-		✓	

## 2.2

27100/15151 24

(TSP 24 Hrs.) 24 (L<sub>eq</sub>) (L<sub>max</sub>)  
(Frequency, Hz) (Peak Particle Velocity, mm/sec)  
(Displacement, mm) 2-1

### 2.2.1

1)

(TSP)

2)

UTM 47 Q 0814061 E, 1866585 N  
UTM 47 Q 0812936 E, 1865175 N  
UTM 47 Q 0816726 E, 1866769 N

3)

(TSP)

- (Equilibrate) 24  
24

- (Equilibrate) 40-60  
24

4) 2556 24-25  
 4 2-2 2556  
 2-2 24-25

		24
( / . )		0.168
		0.036
		0.039
( / . )		** 0.330

: \*\* 24 ( . .2547)  
 9 2547

5) 2556 24-25  
 2547 24 ( . .2547) 9  
 0.330

### 2.2.2

- 1) : 24 (Leq 24 hr.)  
 : 24 (L<sub>max</sub>)
- 2) : UTM 47 Q 0812945 E, 1865151 N  
 : UTM 47 Q 0816710 E, 1866765 N

- 3) : Sound Level Meter  
 : Acoustic Calibrator  
 :  
 :  
 : Global Positioning System

- 4) 24 (Leq 24 hr.)  
 (Sound Level Meter) 1.2  
 3.5



(Weighting A)

(Fast), Mode  $L_{eq}$  1  
(Internal)  
1

24  
( $L_{eq}$  24 hr.)  
Organization of Standardization, ISO)  
2540)

24  
(International  
15 ( . .

5)

24 (Leq 24 hr.) / 4  
2-3 24 24-25 2556 2-3  
2-3 24 24-25 2556

	Leq 24 Hrs.	Lmax
	60.0	107.8
	47.4	79.3
	70*	115**

: \*  
\* \*

15 ( . .2540)

. . 2548

6)

24 (Leq 24 hr.) (Lmax)  
24-25 2556  
15 . . 2540 Leq  
24 hr. 70 Lmax 115

### 2.2.3

1)

- : (Peak Particle Velocity ,mm/sec)
- : (Frequency, Hz)
- : (Displacement,mm)

2)

:	:	:	UTM 47 Q 0815016 E, 1866041 N
:	:	:	UTM 47 Q 0812945 E, 1865151 N
:	:	:	UTM 47 Q 0816710 E, 1866765 N

3)

MiniMate Plus Series III  
 (Buffer Zone)  
 (International Organization for Standardization) ISO 4866  
 DIN 4150

0.5

4)

23 . . 2539

( , , )  
 2-4

24 2556

4

5)

( , , )

24 2556

. . 2548

2-5

2-4

	TRANSVERSE	VERTICAL	LONGITUDINAL
:	-		
;	23	27	21
;	1.11	0.762	1.13
;	0.00843	0.00406	0.00672
:			
	TRANSVERSE	VERTICAL	LONGITUDINAL
;	N/A	N/A	N/A
;	N/A	N/A	N/A
;	N/A	N/A	N/A
:			
	TRANSVERSE	VERTICAL	LONGITUDINAL
;	N/A	N/A	N/A
;	N/A	N/A	N/A
;	N/A	N/A	N/A

# 3

## 3.1

27100/15151

( )

0506/4990

28

2550

( 2)

1.

2.

3.

4.

1-2

9-10

5.

6.

1

7.

3

3

## 3.2

### 3.2.1

27100/15151  
(TSP)

0.33 / . .

3-1

3-1

3-1

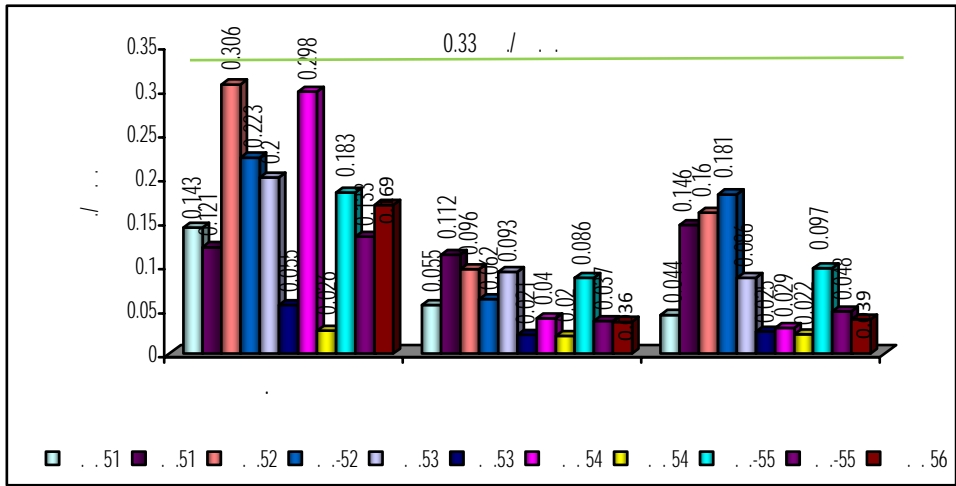
( . .2549- )

/ /	( / . . )			( / . . )
. . 2551	0.143	0.055	0.044	0.330
. . 2551	0.121	0.112	0.146	
. . 2552	0.306	0.096	0.160	
. . 2552	0.223	0.062	0.181	
. . 2553	0.200	0.093	0.086	
. . 2553	0.055	0.021	0.025	
. . 2554	0.298	0.040	0.029	
. . 2554	0.026	0.020	0.022	
. . 2555	0.183	0.086	0.097	
. . 2555	0.133	0.037	0.048	
. . 2556	0.169	0.036	0.039	

: \*

24 ( . . 2547)

121 104 22 . . 2547



3-1

(TSP)

3.2.2

27100/15151

24 hr. 70 Lmax 15 . . 2540 115 3-3 3-3 Leq  
 3-4

3-2

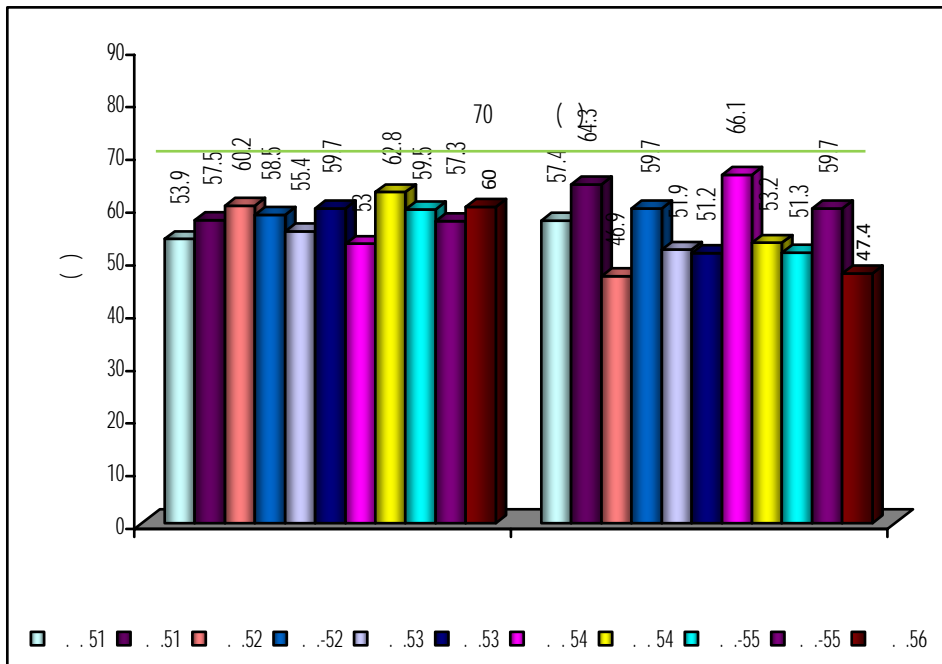
$L_{eq}$   $L_{max}$  ( . . 2549 - )

/ /	(Leq[ ( )])				[ ( )]	
					*	**
	$L_{eq}^*$	$L_{max}^{**}$	$L_{eq}^*$	$L_{max}^{**}$	70	115
. . 2551	53.9	80.2	57.4	103.8		
. . 2551	57.5	99.2	64.3	106.2		
. . 2552	60.2	89.7	46.9	78.5		
. . 2552	58.5	62.2	59.7	96.2		
. . 2553	55.4	100.2	51.9	86.1		
. . 2553	59.7	92.2	51.2	91.8		
. . 2554	53.0	84.6	66.1	86.5		
. . 2554	62.8	92.1	53.2	82.6		
. . 2555	59.5	82.6	51.3	81.8		
. . 2555	57.3	77.4	59.7	90.5		
. . 2556	60.0	107.8	47.4	79.3		

: \*  
\*\*

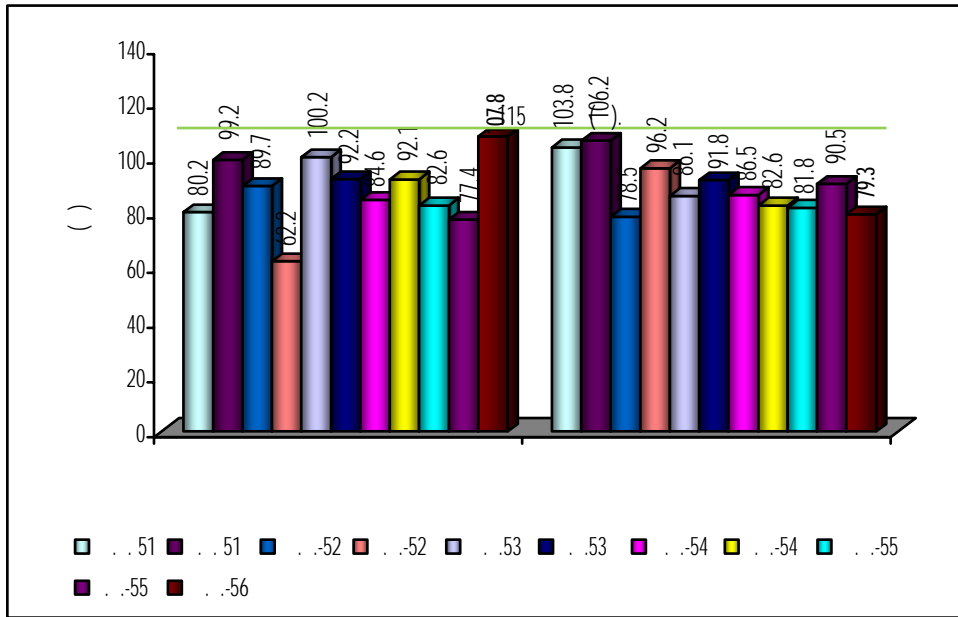
15 ( . . 2540)

29 . . 2548



3-2

24 (Leq)



3-3

(L-max)

### 3.2.3

( , , )

27100/15151

. . 2548

3-4

### 3.3

1.

2.



/				*		*	
		( )	( / )	( )	( )	( )	( )
. . 2551	TRANSVERSE	20	0.699	25.1	0.00732	0.20	
	VERTICAL	30	0.381	37.7	0.00161	0.20	
	LONGITUDINA	17	1.46	21.4	0.0124	0.20	
. . 2551	TRANSVERSE	20	0.572	25.1	0.00406	0.20	
	VERTICAL	34	0.381	42.7	0.00161	0.20	
	LONGITUDINA	64	0.635	50.8	0.00524	0.20	
. . 2552	TRANSVERSE	20	0.381	25.1	0.00220	0.20	
	VERTICAL	47	0.191	50.8	0.00003	0.20	
	LONGITUDINA	23	0.508	28.9	0.00353	0.20	
. . 2552	TRANSVERSE	N/A	0.0635	-	0.00003	-	
	VERTICAL	20	0.191	25.1	0.00003	0.20	
	LONGITUDINA	13	0.381	16.3	0.00366	0.20	
. . 2553	TRANSVERSE	28	1.27	35.2	0.00654	0.20	
	VERTICAL	23	0.508	28.9	0.00251	0.20	
	LONGITUDINA	34	1.08	42.7	0.00481	0.20	
. . 2553	TRANSVERSE	51	1.71	50.8	0.00546	0.20	
	VERTICAL	N/A	N/A	-	N/A	-	
	LONGITUDINA	47	1.84	-	0.00564	-	
. . 2554	TRANSVERSE	N/A	N/A	-	N/A	-	
	VERTICAL	N/A	N/A	-	N/A	-	
	LONGITUDINA	N/A	N/A	-	N/A	-	
. . 2554	TRANSVERSE	N/A	N/A	-	N/A	-	
	VERTICAL	N/A	N/A	-	N/A	-	
	LONGITUDINA	N/A	N/A	-	N/A	-	
. . 2555	TRANSVERSE	>100	0.857	< 50.8	0.00088	< 0.20	
	VERTICAL	18	0.476	< 22.6	0.0155	< 0.20	
	LONGITUDINA	>100	2.100	< 50.8	0.00488	< 0.20	
. . 2555	TRANSVERSE	20	0.222	25.1	0.00179	< 0.20	
	VERTICAL	23	0.286	28.9	0.00184	< 0.20	
	LONGITUDINA	>100	0.111	50.9	0.00031	< 0.20	
. . 2556	TRANSVERSE	23	1.11	28.9	0.00843	< 0.20	
	VERTICAL	27	0.762	33.9	0.00406	< 0.20	
	LONGITUDINA	21	1.13	26.4	0.00672	< 0.20	

N/A < 2

N/A < 0.25

N/A = 0

\*

122

125

29

2548

3-4

/		( )	( / )	*		
				( )	( )	
. . 2551	TRANSVERSE	7	0.254	12.7	0.00202	0.29
	VERTICAL	6	0.254	12.7	0.00288	0.34
	LONGITUDINA	17	0.127	21.4	0.00003	0.20
. . 2551	TRANSVERSE	N/A	N/A	-	N/A	-
	VERTICAL	N/A	N/A	-	N/A	-
	LONGITUDINA	N/A	N/A	-	N/A	-
. . 2552	TRANSVERSE	N/A	N/A	-	N/A	-
	VERTICAL	N/A	N/A	-	N/A	-
	LONGITUDINA	N/A	N/A	-	N/A	-
. . 2552	TRANSVERSE	N/A	N/A	-	N/A	-
	VERTICAL	N/A	N/A	-	N/A	-
	LONGITUDINA	N/A	N/A	-	N/A	-
. . 2553	TRANSVERSE	N/A	N/A	-	N/A	-
	VERTICAL	N/A	N/A	-	N/A	-
	LONGITUDINA	N/A	N/A	-	N/A	-
. . 2553	TRANSVERSE	N/A	N/A	-	N/A	-
	VERTICAL	N/A	N/A	-	N/A	-
	LONGITUDINA	N/A	N/A	-	N/A	-
. . 2554	TRANSVERSE	N/A	N/A	-	N/A	-
	VERTICAL	N/A	N/A	-	N/A	-
	LONGITUDINA	N/A	N/A	-	N/A	-
. . 2554	TRANSVERSE	N/A	N/A	-	N/A	-
	VERTICAL	N/A	N/A	-	N/A	-
	LONGITUDINA	N/A	N/A	-	N/A	-
. . 2555	TRANSVERSE	16	0.127	< 20.1	0.00136	< 0.20
	VERTICAL	9.1	0.0794	< 12.7	0.00144	< 0.23
	LONGITUDINA	11	0.0952	< 13.8	0.00175	< 0.20
. . 2555	TRANSVERSE	N/A	N/A	-	N/A	-
	VERTICAL	N/A	N/A	-	N/A	-
	LONGITUDINA	N/A	N/A	-	N/A	-
. . 2556	TRANSVERSE	N/A	N/A	-	N/A	-
	VERTICAL	N/A	N/A	-	N/A	-
	LONGITUDINA	N/A	N/A	-	N/A	-

N/A < 2

N/A < 0.25

N/A = 0

\*

122

125

29

2548

3-5

/		( )	( / )	*		
				( )	( )	
. . 2551	TRANSVERSE	39	0.254	49	0.00078	0.20
	VERTICAL	43	0.127	50.9	0.00003	0.20
	LONGITUDINA	43	0.191	50.9	0.00003	0.20
. . 2551	TRANSVERSE	15	0.254	18.8	0.00053	0.20
	VERTICAL	N/A	0.127	-	0.00003	-
	LONGITUDINA	>100	0.127	50.8	0.00003	0.20
. . 2552	TRANSVERSE	N/A	N/A	-	N/A	-
	VERTICAL	N/A	N/A	-	N/A	-
	LONGITUDINA	N/A	N/A	-	N/A	-
. . 2552	TRANSVERSE	N/A	N/A	-	N/A	-
	VERTICAL	N/A	N/A	-	N/A	-
	LONGITUDINA	N/A	N/A	-	N/A	-
. . 2553	TRANSVERSE	N/A	N/A	-	N/A	-
	VERTICAL	N/A	N/A	-	N/A	-
	LONGITUDINA	N/A	N/A	-	N/A	-
. . 2553	TRANSVERSE	N/A	N/A	-	N/A	-
	VERTICAL	N/A	N/A	-	N/A	-
	LONGITUDINA	N/A	N/A	-	N/A	-
. . 2554	TRANSVERSE	N/A	N/A	-	N/A	-
	VERTICAL	N/A	N/A	-	N/A	-
	LONGITUDINA	N/A	N/A	-	N/A	-
. . 2554	TRANSVERSE	N/A	N/A	-	N/A	-
	VERTICAL	N/A	N/A	-	N/A	-
	LONGITUDINA	N/A	N/A	-	N/A	-
. . 2555	TRANSVERSE	10	0.381	< 12.7	0.00771	< 0.20
	VERTICAL	6.0	0.270	< 12.7	0.00553	< 0.34
	LONGITUDINA	6.1	0.381	< 12.7	0.00673	< 0.34
. . 2555	TRANSVERSE	N/A	N/A	-	N/A	-
	VERTICAL	N/A	N/A	-	N/A	-
	LONGITUDINA	N/A	N/A	-	N/A	-
. . 2556	TRANSVERSE	N/A	N/A	-	N/A	-
	VERTICAL	N/A	N/A	-	N/A	-
	LONGITUDINA	N/A	N/A	-	N/A	-

N/A < 2 , N/A < 0.25 / , N/A = 0

\*

122 125 29 2548